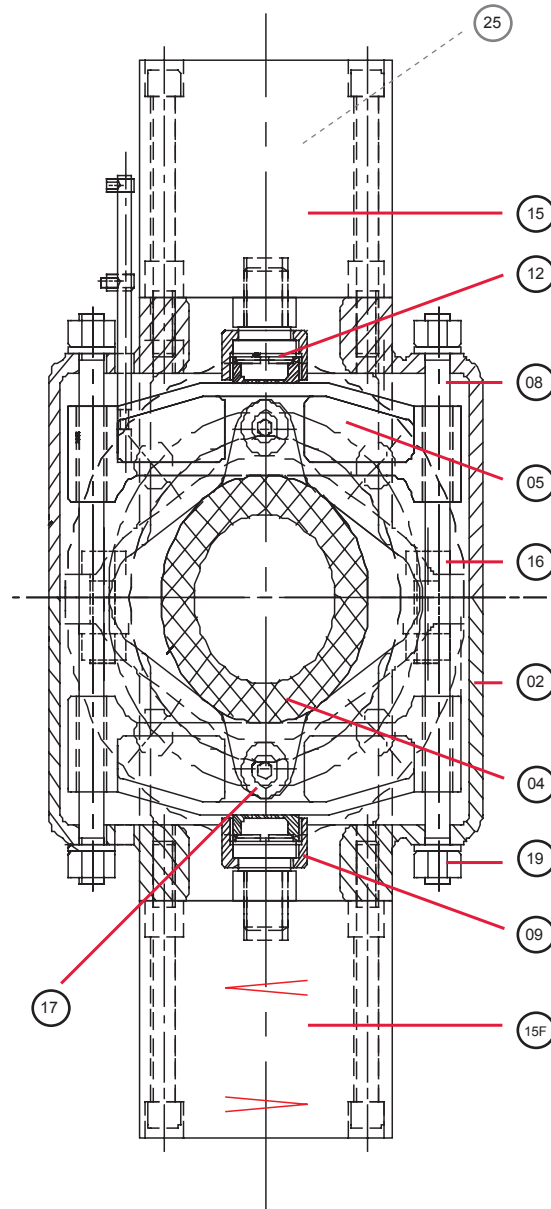


Mechanical Pinch Valve, OV series

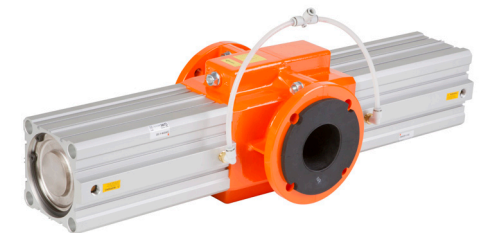
Typ / type P2-PA2

with two pneumatic cylinders

Code	Description	Quantity DN 65-250
02	body half	2
04	sleeve	1
05	sleeve compressor	2
08	guide rod	2
09	ring nut	2
12	adaption pin	2
15	cylinder doble acting	2
15F	cylinder single acting (spring closed)	2
16	body screw	4
17	sleeve fixing screw	4
19	guide rod nut	4
25	set of seal for cylinder	2



Diameter type P2:
DN 65 - 250



Diameter type PA2:
DN 65 - 200

AKO UK Ltd

12 Rutherford Way, Drayton Fields Industrial Estate, Daventry, NN11 8XW, Great Britain

Tel: 0 13 27 31 27 47 • Fax: 0 13 27 31 25 65 • E-mail: sales@ako-valves.com • Web: www.pinch-valves.com