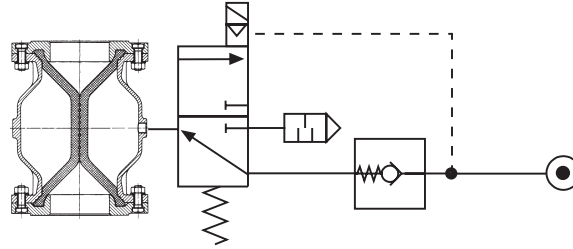


Safety Arrangement type ss



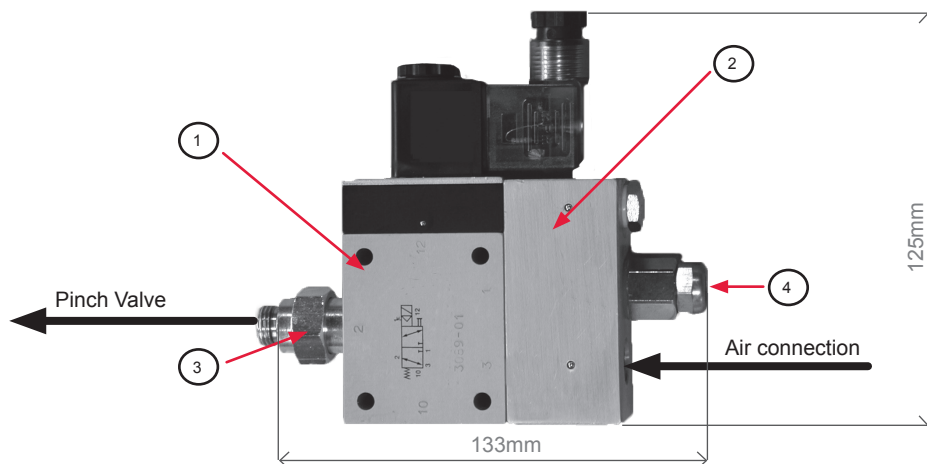
By using a protection circuit a closed air pinch valve will stay closed if the compressed air/power supply fails.

If the compressed air fails, the air operated pinch valve cannot be opened by the solenoid valve (electrically/mechanically).

If there is a power cut, the pinch valve can be opened and closed by means of a manual override.

The used solenoid valves are checked especially for tightness, thus guaranteeing the longest blow-down pressure stability possible.

The blow-down pressure stability, which is affected by time in terms of how long a air operated pinch valve will stay closed without a compressed air supply, is still dependent on the volume of air and a air operated pinch valve's tightness.



Consisting of:

- ① 1 x Solenoid Valve* with light connector and protective circuit
- ② 1 x Control block
- ③ 1 x Fitting G 1/4" with O-ring
- ④ 1 x Silencer + Small parts

* For dimensions of Solenoid Valve see separate data sheet (DB_ZUB_MV_EN_XXXX-XX-XX)

Technical details subject to change without notice.

AKO UK Ltd.

12 Rutherford Way, Drayton Fields Industrial Estate, Daventry, NN11 8XW, Great Britain

Tel: 0 13 27 31 27 47 • Fax: 0 13 27 31 25 65 • E-mail: sales@ako-valves.com • Web: www.pinch-valves.com